

£900 PCM

Royal Oak Court, Portsmouth PO1  
3LG

**bernards**  
THE ESTATE AGENTS



## HIGHLIGHTS

- ❖ ONE BEDROOM APARTMENT
- ❖ SOUGHT AFTER LOCATION
- ❖ FIRST FLOOR
- ❖ FURNISHED
- ❖ OPEN PLAN LIVING AREA
- ❖ CLOSE TO AMMENITIES
- ❖ AVAILABLE AUGUST
- ❖ IDEAL FOR PROFESSIONALS
- ❖ STORAGE
- ❖ A MUST VIEW

We are delighted to welcome to the rental market, this well presented one bedroom apartment, in a central location, in close proximity to local amenities.

Offered furnished, this property is comprised of a spacious double bedroom and an open plan kitchen/lounge, which is flooded with natural light.

Completing the property is the three-piece bathroom.

Offered furnished, we strongly recommend booking an internal viewing!

Call today to arrange a viewing  
02392 864 974  
[www.bernardsestates.co.uk](http://www.bernardsestates.co.uk)





Call today to arrange a viewing  
02392 864 974  
[www.bernardsestates.co.uk](http://www.bernardsestates.co.uk)





# PROPERTY INFORMATION

## KITCHEN/LOUNGE

13'7" x 12'8" (4.14m x 3.86m)

## BEDROOM

9'1" x 10'5" (2.77m x 3.18m)

## BATHROOM

6'2" x 8'2" (1.88m x 2.49m)

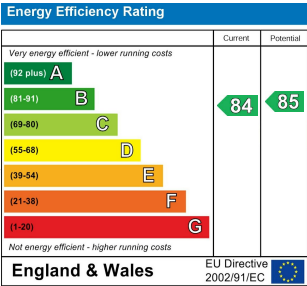
## Council Tax Band B

## Removal Quotes

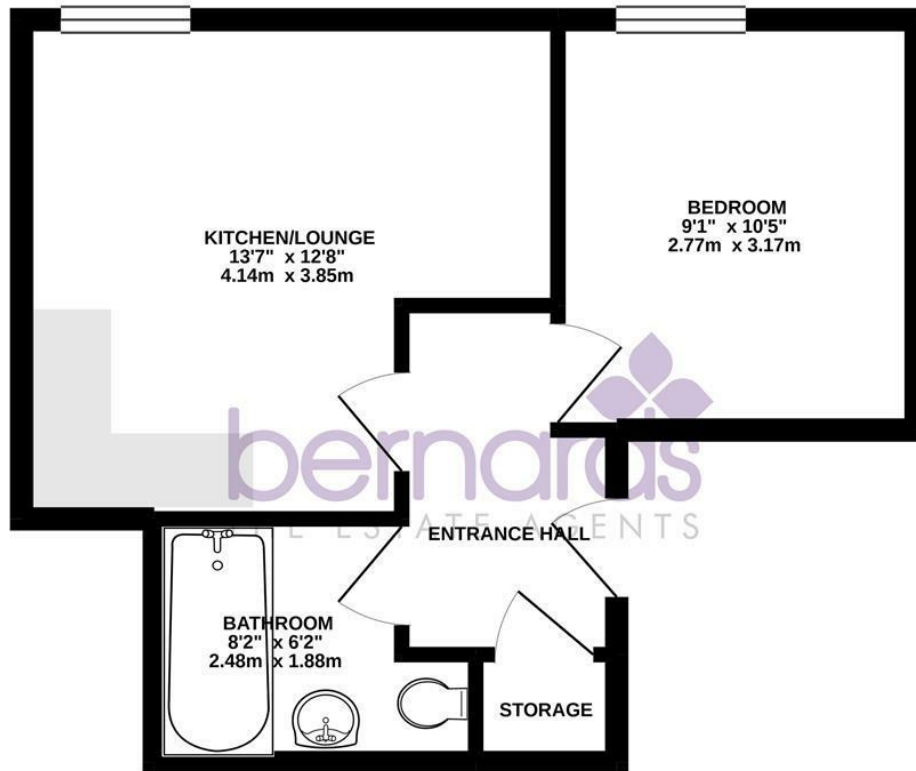
As part of our drive to assist clients with all aspects of the moving process, we have sourced a reputable removal company. Please ask a member of our sales team for further details and a quotation.

## Right to Rent

Each applicant will be subject to the right to rent checks. This is a government requirement since February 2016. We are required to check and take a copy of the original version of acceptable documentation in order to adhere to the Right to rent checks. This will be carried out at referencing stage. Please speak to a member of staff for acceptable Identification.

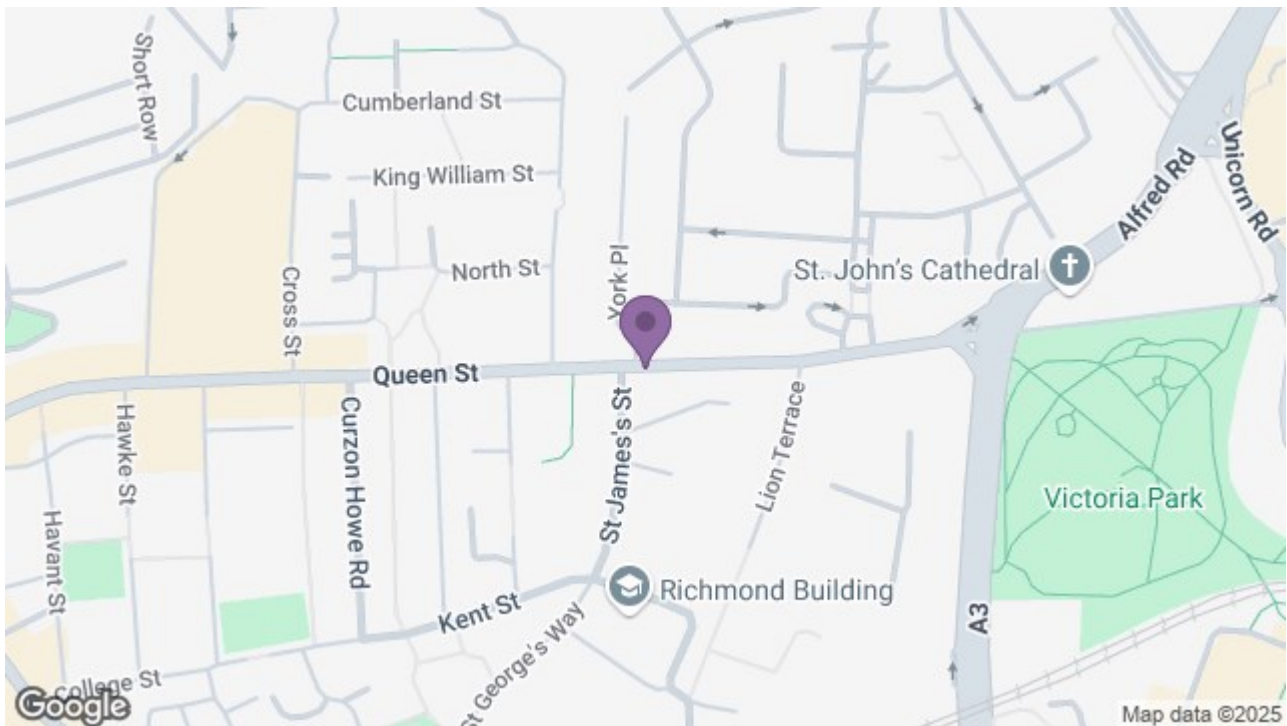


FIRST FLOOR  
342 sq.ft. (31.8 sq.m.) approx.



TOTAL FLOOR AREA : 342 sq.ft. (31.8 sq.m.) approx.

Whilst every attempt has been made to ensure the accuracy of the floorplan contained here, measurements of doors, windows, rooms and any other items are approximate and no responsibility is taken for any error, omission or mis-statement. This plan is for illustrative purposes only and should be used as such by any prospective purchaser. The services, systems and appliances shown have not been tested and no guarantee as to their operability or efficiency can be given.  
Made with Metropix ©2020



8 Clarendon Road, Southsea, Hampshire, PO5 2EE  
t: 02392 864 974

